



Woods House, Grosvenor Waterside
London SW1W

GARTONJONES.COM



Woods House, Grosvenor Waterside London, SW1W

£625 Per Week

GARTON JONES.COM

8 Gatliff Road
Grosvenor
Waterside
Chelsea
London
SW1W 8DP

Lettings:
+44 (0) 20 7730 5007
gws@gartonjones.com
www.gartonjones.com

A one DOUBLE bedroom apartment to rent of approx. 492 sq.ft (46 sq.m) in Woods House, Grosvenor Waterside, located close to the banks of the River Thames by Chelsea Bridge. This FURNISHED property benefits from an open plan reception room with a Juliette style balcony overlooking landscaped communal gardens. There is a modern kitchen with a breakfast bar, a bathroom and storage including fitted wardrobes to the bedroom. 24 HOUR CONCIERGE. On-site Sainsbury's Local, coffee shop and private kids club. SLOANE SQUARE & VICTORIA station with Gatwick Express are within walking distance.

Available via Garton Jones on-site office at Grosvenor Waterside (underneath Bramah House).

Please note furniture may differ to that shown in the current photos.

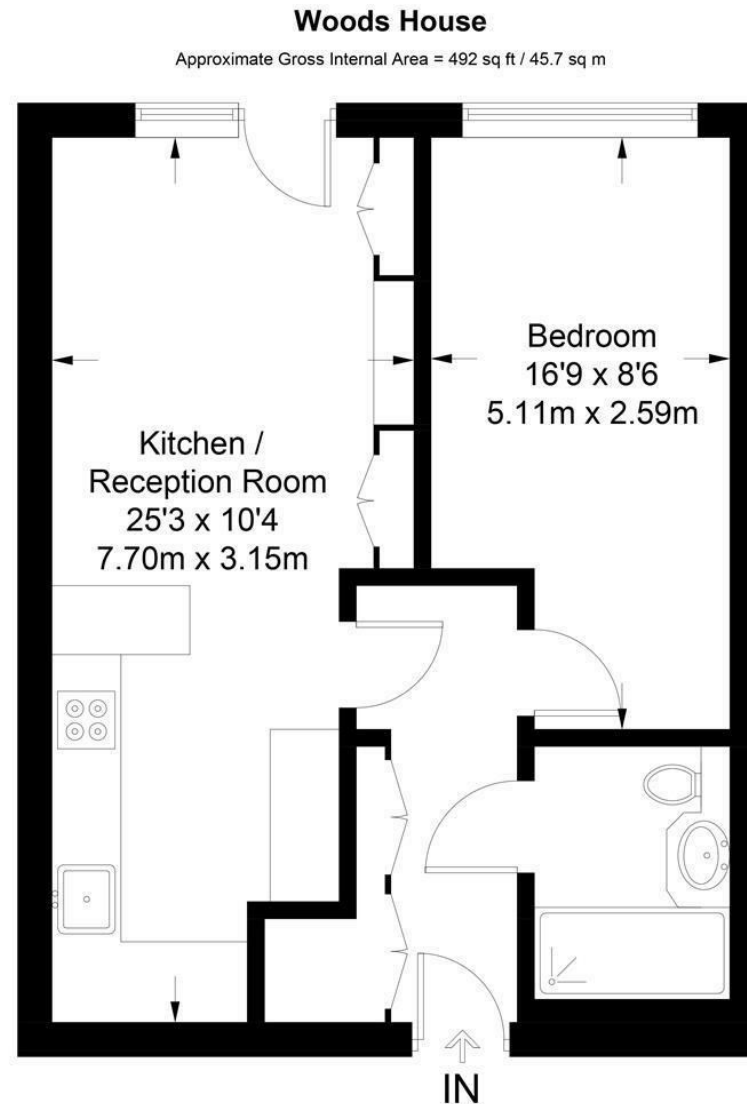
Council Tax: Westminster Council (band D). Total: £912.05 per annum TBC

5 week deposit required. 12 month minimum term.

EPC rating: B TBC

- 492sq.ft (46sq.m)
- 4th Floor (With Lift)
- 1 Double Bedroom
- Bathroom
- Open Plan Reception Room
- Modern Kitchen
- Juliette Style Balcony
- 24 Hour Concierge & Gym & Spa Facilities
- On-Site Sainsbury's, Coffee Shop, Creche & Purple Dragon Private Kids Club
- Close to Sloane Square & Victoria





Not to scale, for guidance only and must not be relied upon as a statement of fact.
All measurements and areas are approximate only and have been prepared in
accordance with the current edition of the RICS Code of Measuring Practice.

